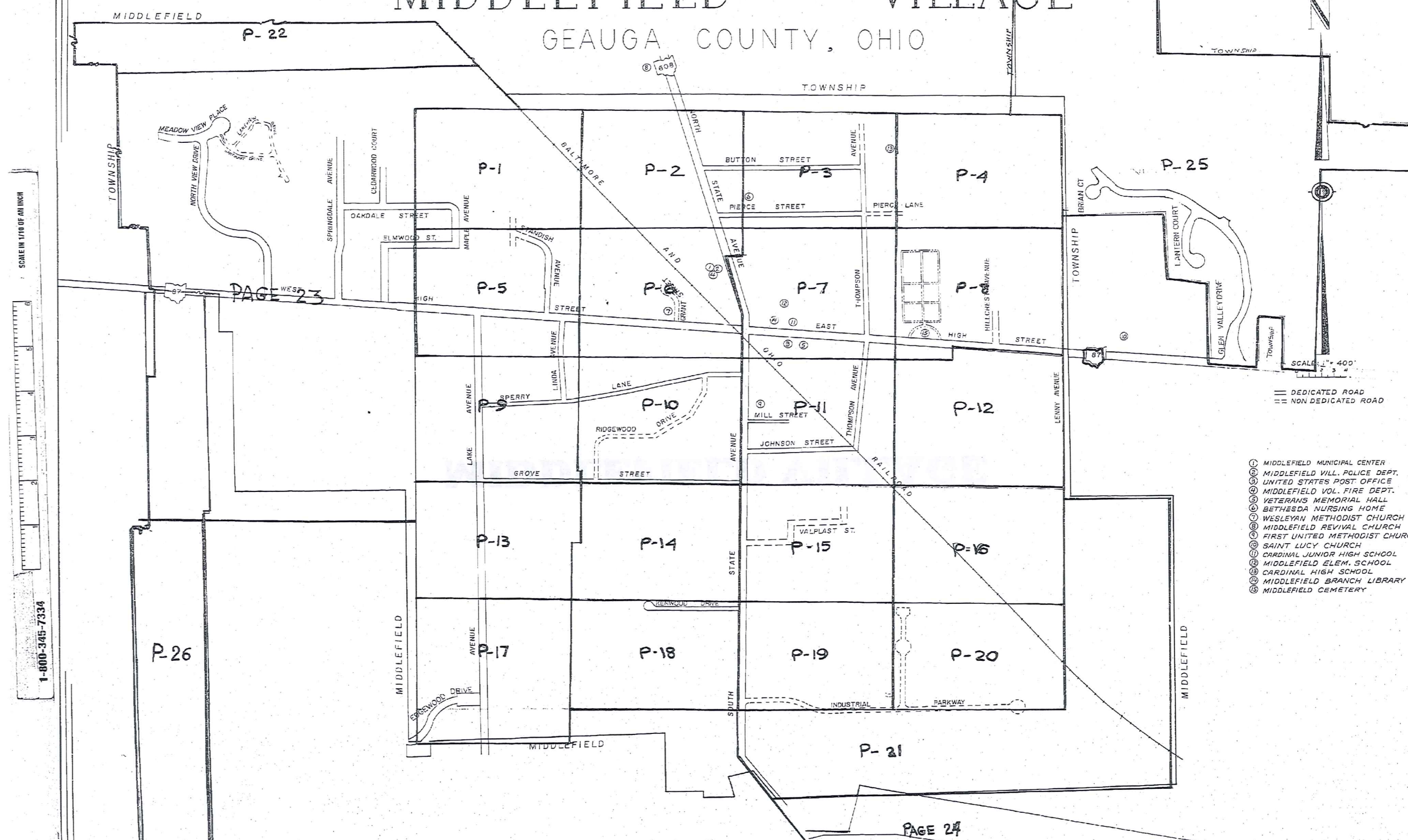




MIDDLEFIELD VILLAGE

MAP OF MIDDLEFIELD VILLAGE

GEAUGA COUNTY, OHIO



- ① MIDDLEFIELD MUNICIPAL CENTER
- ② MIDDLEFIELD VILL. POLICE DEPT.
- ③ UNITED STATES POST OFFICE
- ④ MIDDLEFIELD VOL. FIRE DEPT.
- ⑤ VETERANS MEMORIAL HALL
- ⑥ BETHESDA NURSING HOME
- ⑦ WESLEYAN METHODIST CHURCH
- ⑧ MIDDLEFIELD REVIVAL CHURCH
- ⑨ FIRST UNITED METHODIST CHURCH
- ⑩ SAINT LUCY CHURCH
- ⑪ CARDINAL JUNIOR HIGH SCHOOL
- ⑫ MIDDLEFIELD ELEM. SCHOOL
- ⑬ CARDINAL HIGH SCHOOL
- ⑭ MIDDLEFIELD BRANCH LIBRARY
- ⑮ MIDDLEFIELD CEMETERY

306

SCALE IN 1/10 OF AN INCH
1-800-345-7334

PAGE 23

PAGE 24

OFFICE OF GEAUGA COUNTY ENGINEER
CHARDON, OHIO

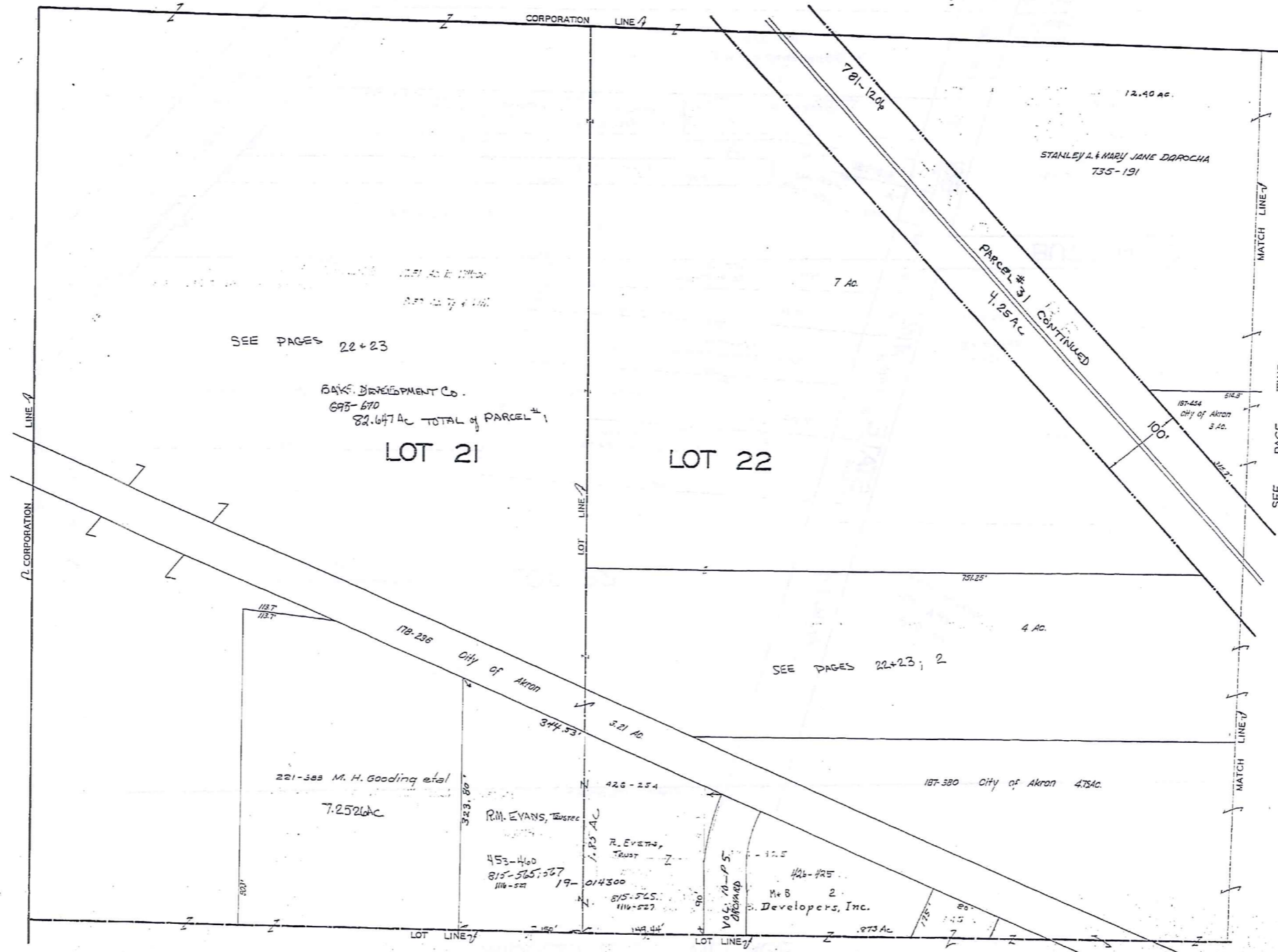
MIDDLEFIELD VILLAGE

PAGE I

SCALE IN 1/10 OF AN INCH



1-800-345-7334



SEE PAGES 22+23

BAKERS DEVELOPMENT CO.
695-670
82.647 Ac TOTAL of PARCEL #1

LOT 21

LOT 22

STANLEY A. & MARY JANE DAROCHA
735-191

PARCEL #3 CONTINUED
4.25 AC

12.40 AC

7 AC

187-454
City of Akron
3 AC

221-388 M. H. Gooding et al
7.2526 AC

R.M. EVANS, Trustee
453-460
815-565, 527
116-521

R. EVANS, Trustee
014300
815-525
116-527

M.B. Developers, Inc.
#26-#25
M.B. 2

SEE PAGES 22+23; 2

SEE PAGE FIVE



SCALE 1"=66'

JANUARY 1, 1998

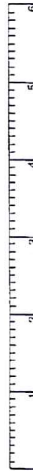
SEE PAGE TWO

RELATIVE REPRESENTATION
MIDDLEFIELD VILLAGE
PG 1

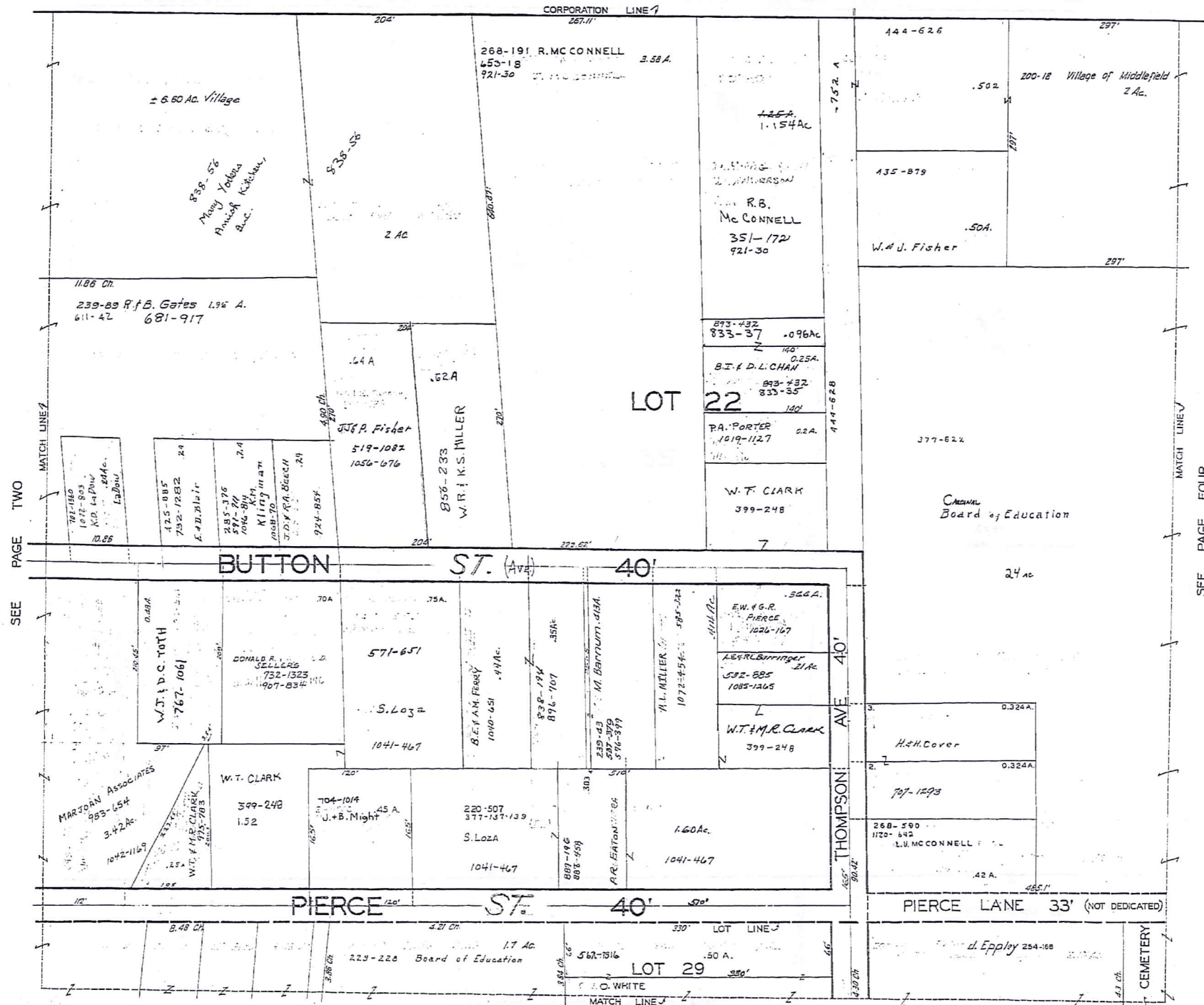
307

MIDDLEFIELD VILLAGE

SCALE IN 1/10 OF AN INCH



1-800-345-7334



SEE PAGE TWO

SEE PAGE FOUR

SEE PAGE SEVEN



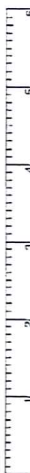
SCALE 1"=66'

JAN. 1, 1998

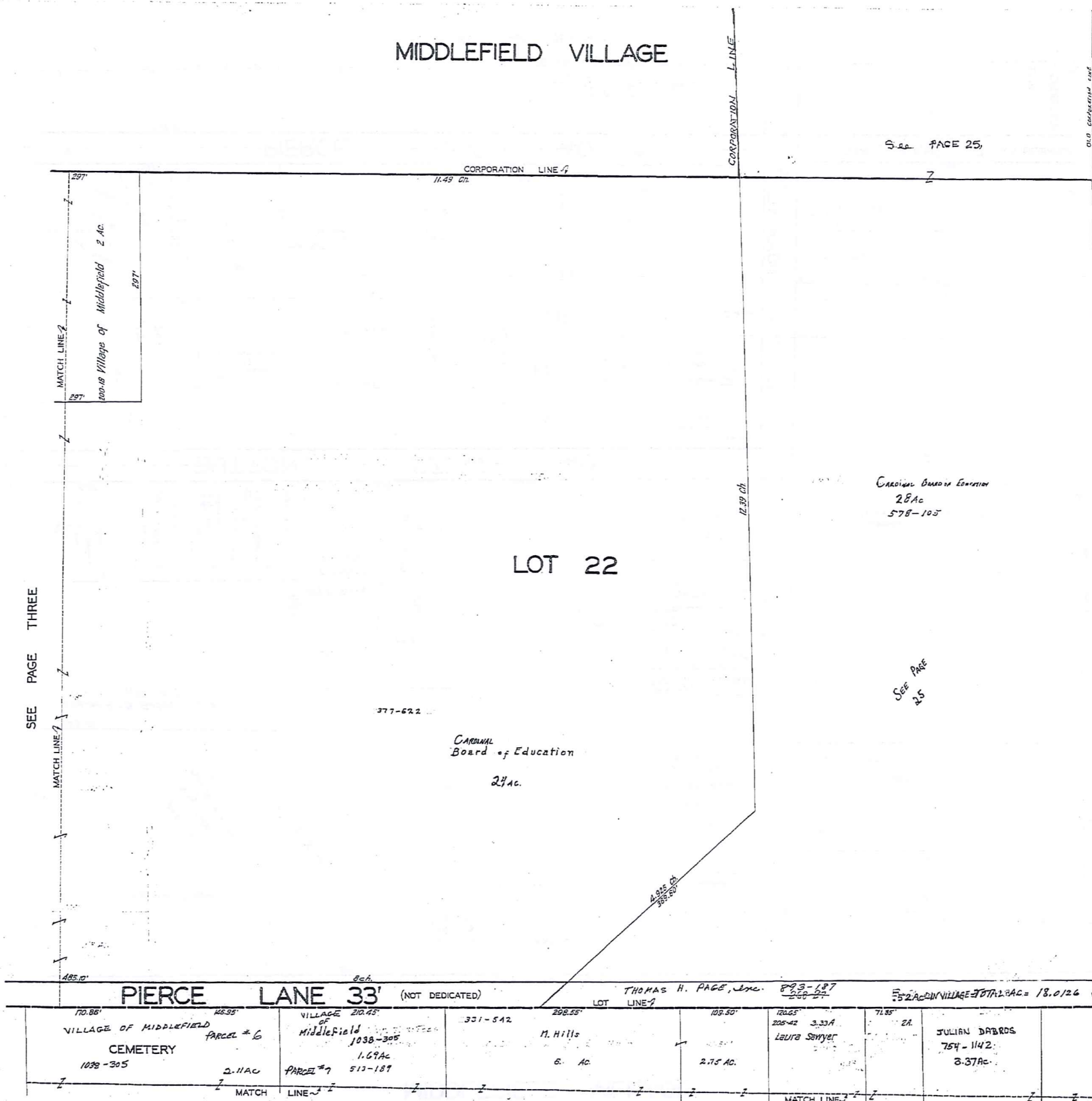
309

MIDDLEFIELD VILLAGE

SCALE 1/10 OF AN INCH



1-800-345-7334



See PAGE 25

LOT 22

CARDINAL Board of Education
2.4 AC.

CARDINAL Board of Education
2.8 AC
578-105

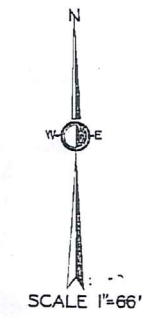
See PAGE 25

PIERCE LANE 33' (NOT DEDICATED)

170.85'	146.55'	VILLAGE OF MIDDLEFIELD PARCEL # 6 CEMETERY 1038-305 2.11 AC	VILLAGE OF Middlefield 1038-305 1.67 AC 513-187	331-542 M. Hills 6 AC	298.55'	THOMAS H. PAGE, Inc. 893-187 200-27	109.50'	106.65'	205-42 LEURA SEWYER 3.33A 2.75 AC	71.85'	2A JULIAN DABROS 754-1142 3.37 AC
---------	---------	--	--	-----------------------------	---------	---	---------	---------	--	--------	--

LOT 29

SEE PAGE EIGHT



SCALE 1"=66'

310

SEE P-25

JANUARY 1, 1998

RELATIVE REPRESENTATION

MIDDLEFIELD VILLAGE PG 4

MIDDLEFIELD VILLAGE

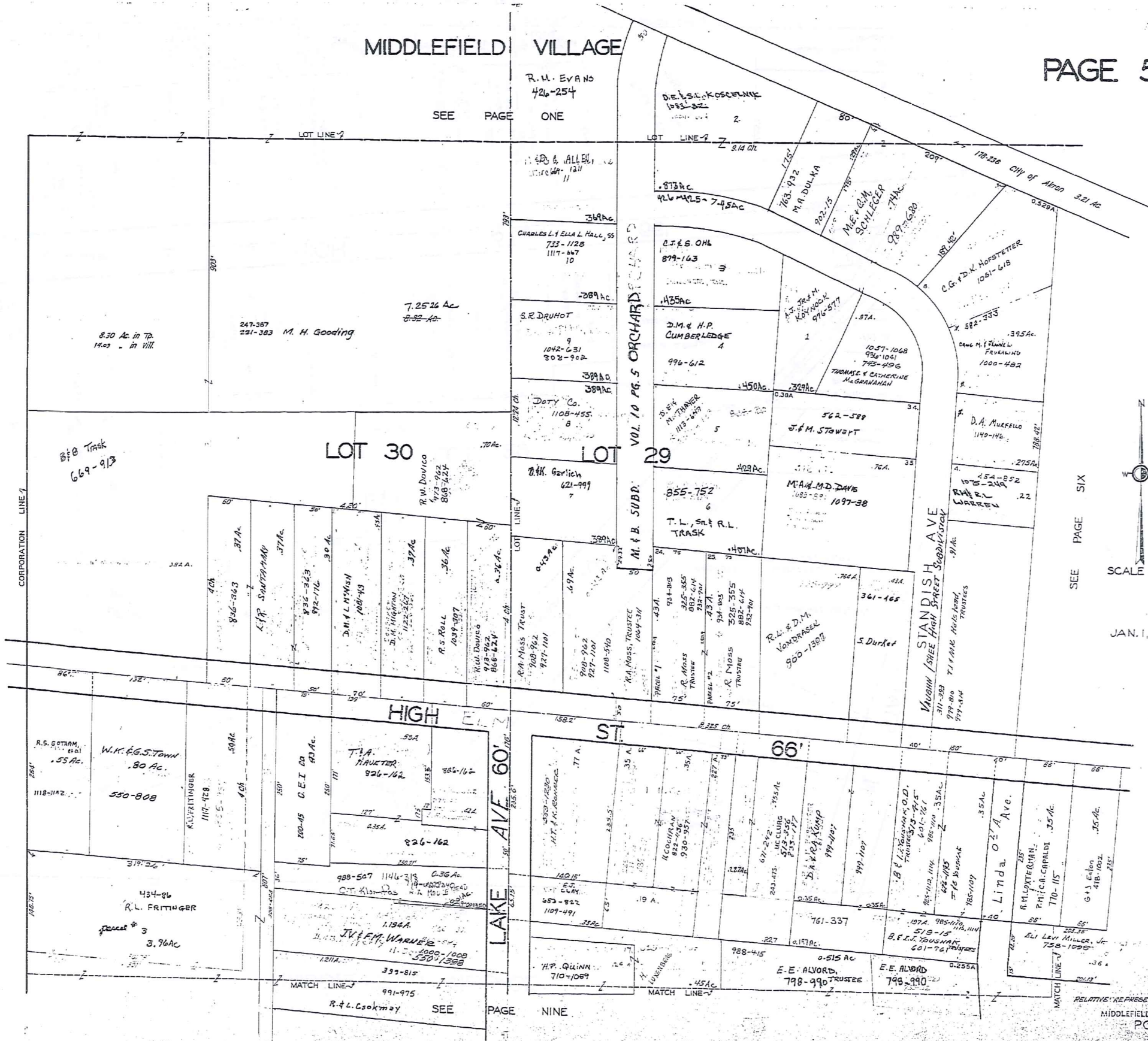
SEE PAGE ONE

R. U. EVANS
426-254

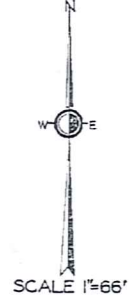
SCALE 1/10 OF AN INCH



1-800-345-7334



SEE PAGE SIX



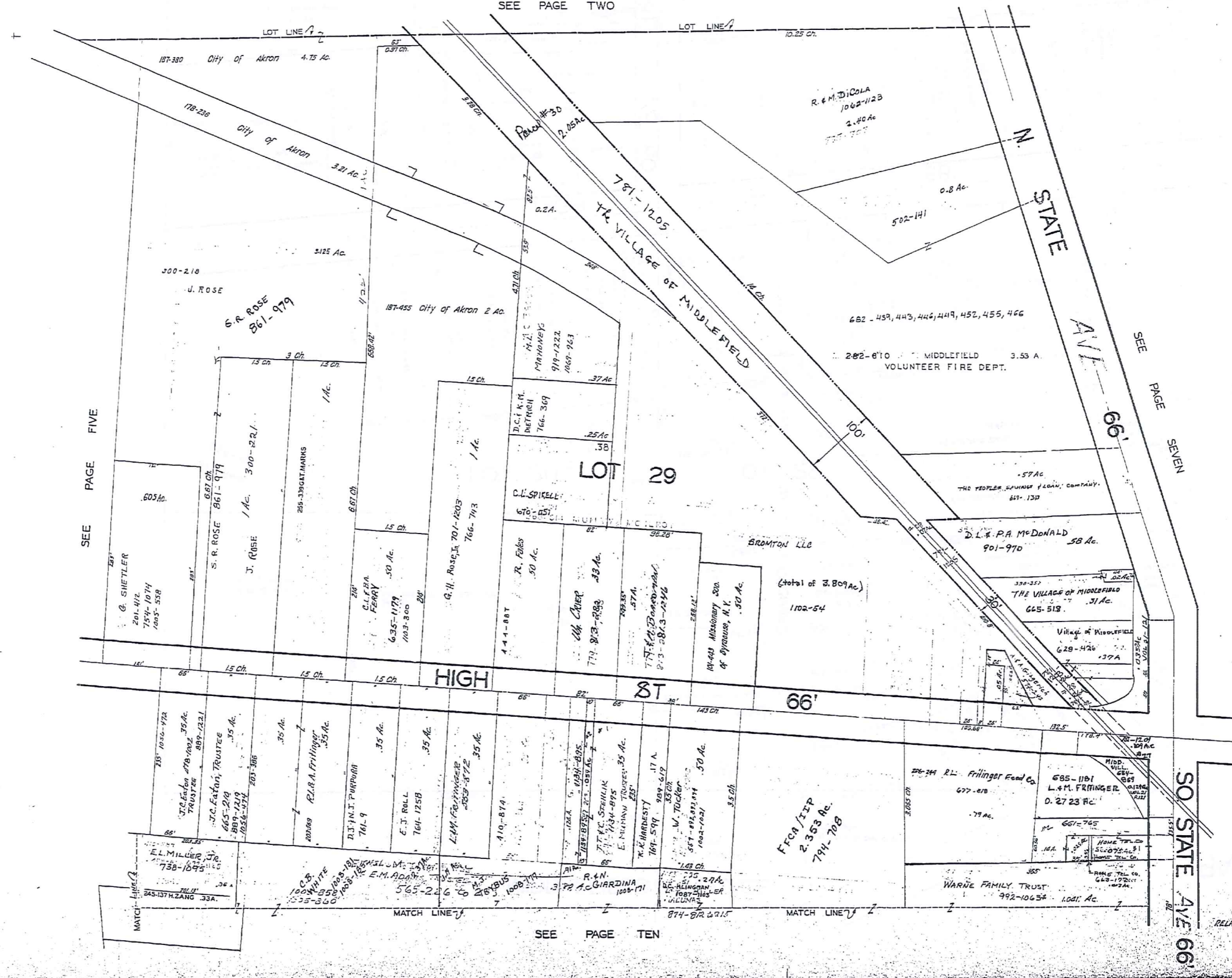
JAN. 1, 1998

SEE PAGE TWO

SCALE IN 1/10 OF AN INCH



1-800-345-7334



SEE PAGE FIVE

SEE PAGE SEVEN

SEE PAGE TEN



SCALE 1"=66'

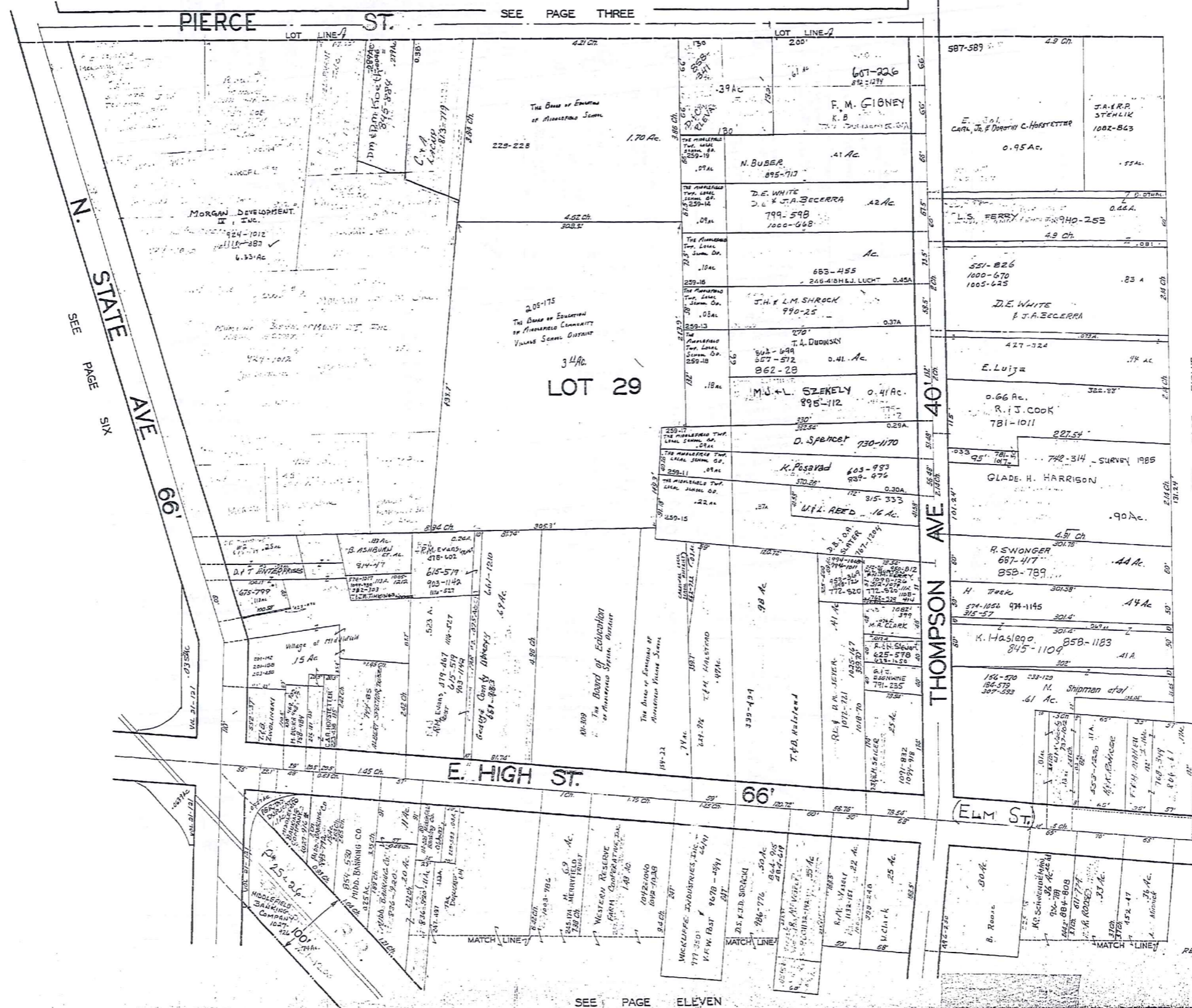
JAN. 1, 1998

312

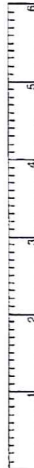
SO STATE AVE 66'

RELATIVE REPRESENTATION
MIDDLEFIELD VILLAGE
PG 6

MIDDLEFIELD VILLAGE



SCALE IN 1/16 OF AN INCH



1-800-345-7334

SEE PAGE THREE

SEE PAGE SIX

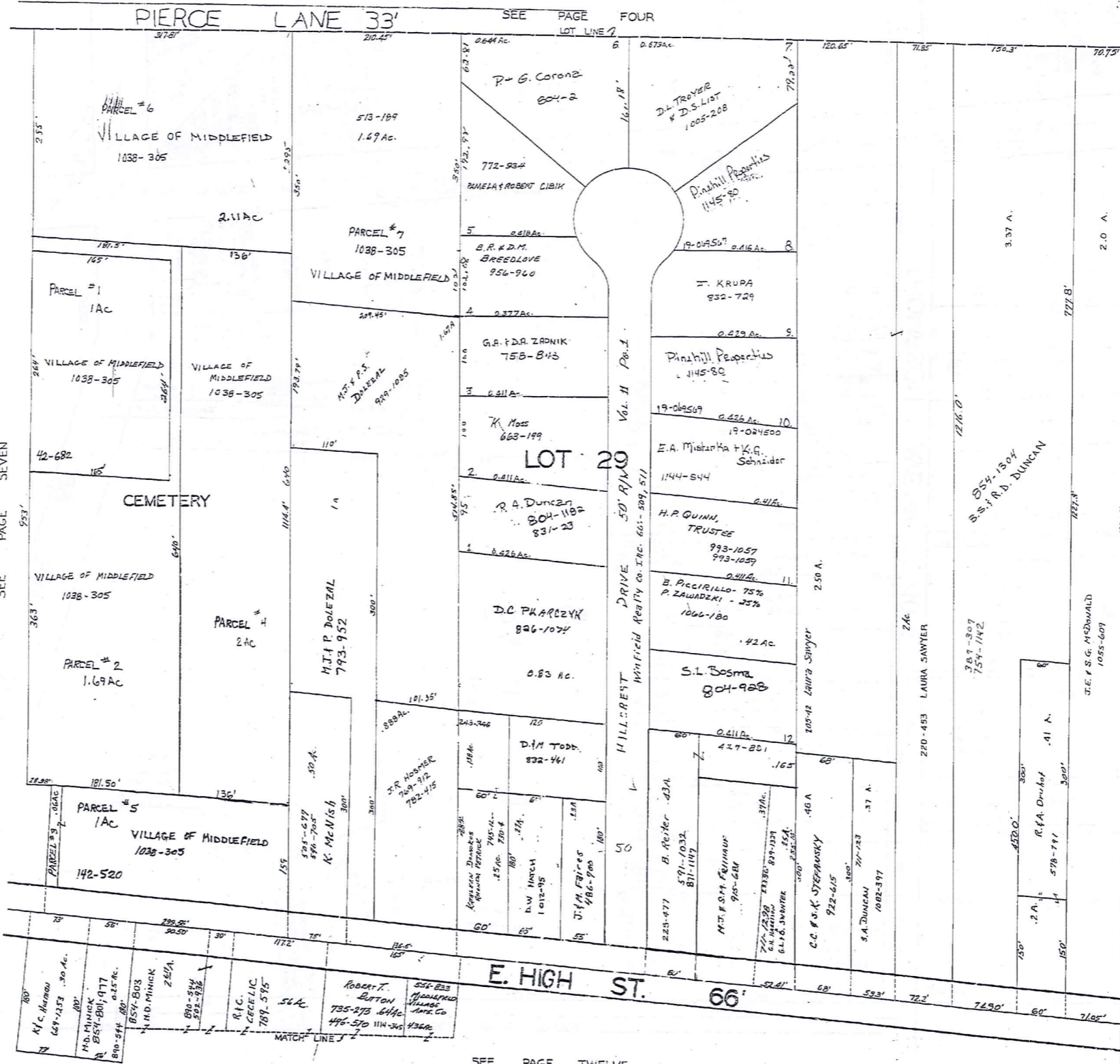
SEE PAGE EIGHT

SEE PAGE ELEVEN



313

JANUARY 1, 1998
 RELATIVE REPRESENTATION
 MIDDLEFIELD VILLAGE
 PG 7



SCALE IN 1/10 OF AN INCH

1-800-345-7334

SEE PAGE SEVEN

SEE PAGE TWELVE



SCALE 1"=66'

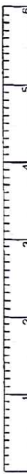
JAN. 1, 1998.

RELATIVE REPRESENTATION

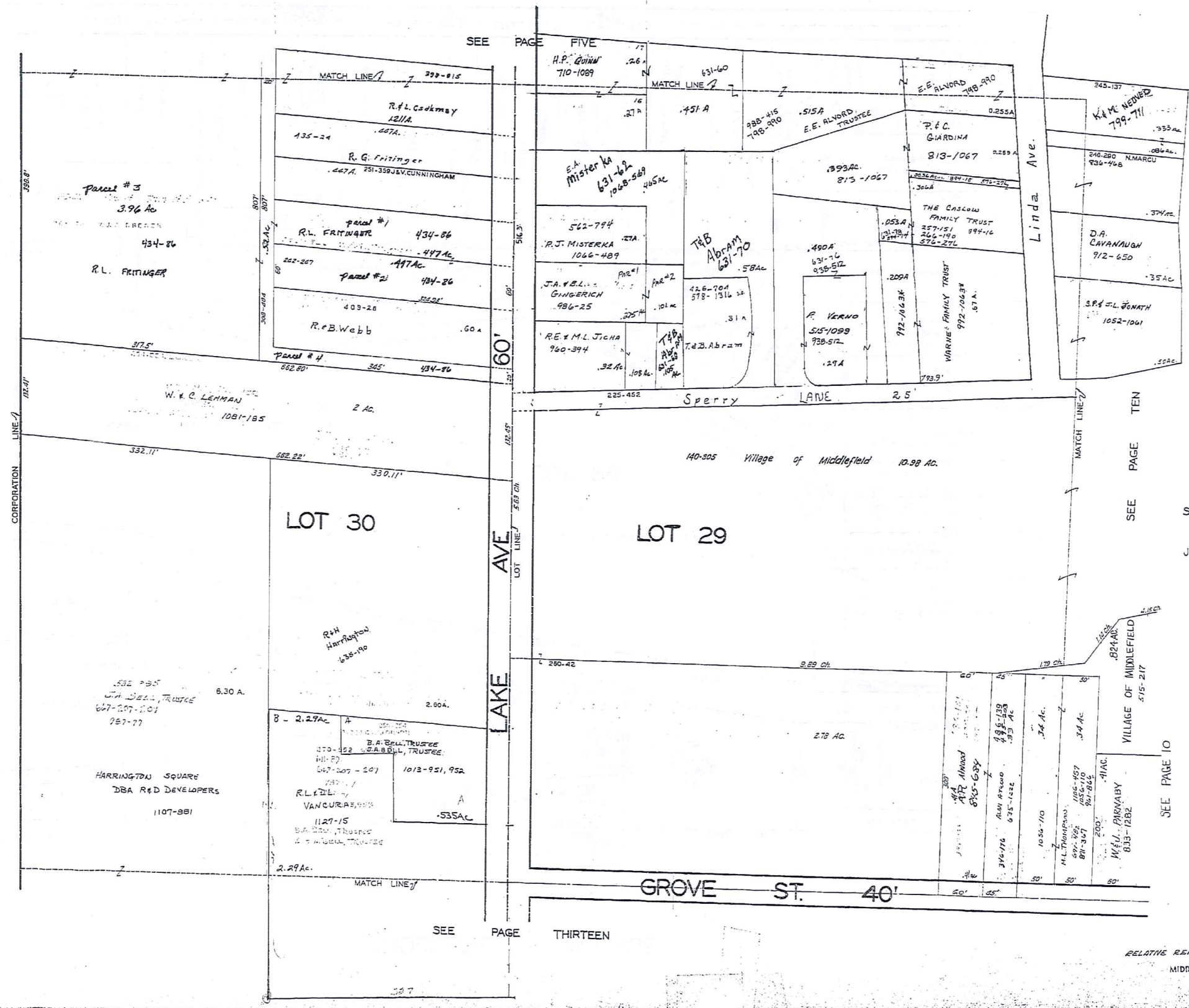
MIDDLEFIELD VILLAGE

PG. 8

SCALE IN 1/10 OF AN INCH



1-800-345-7334



SCALE 1"=66'

JAN. 1, 1998

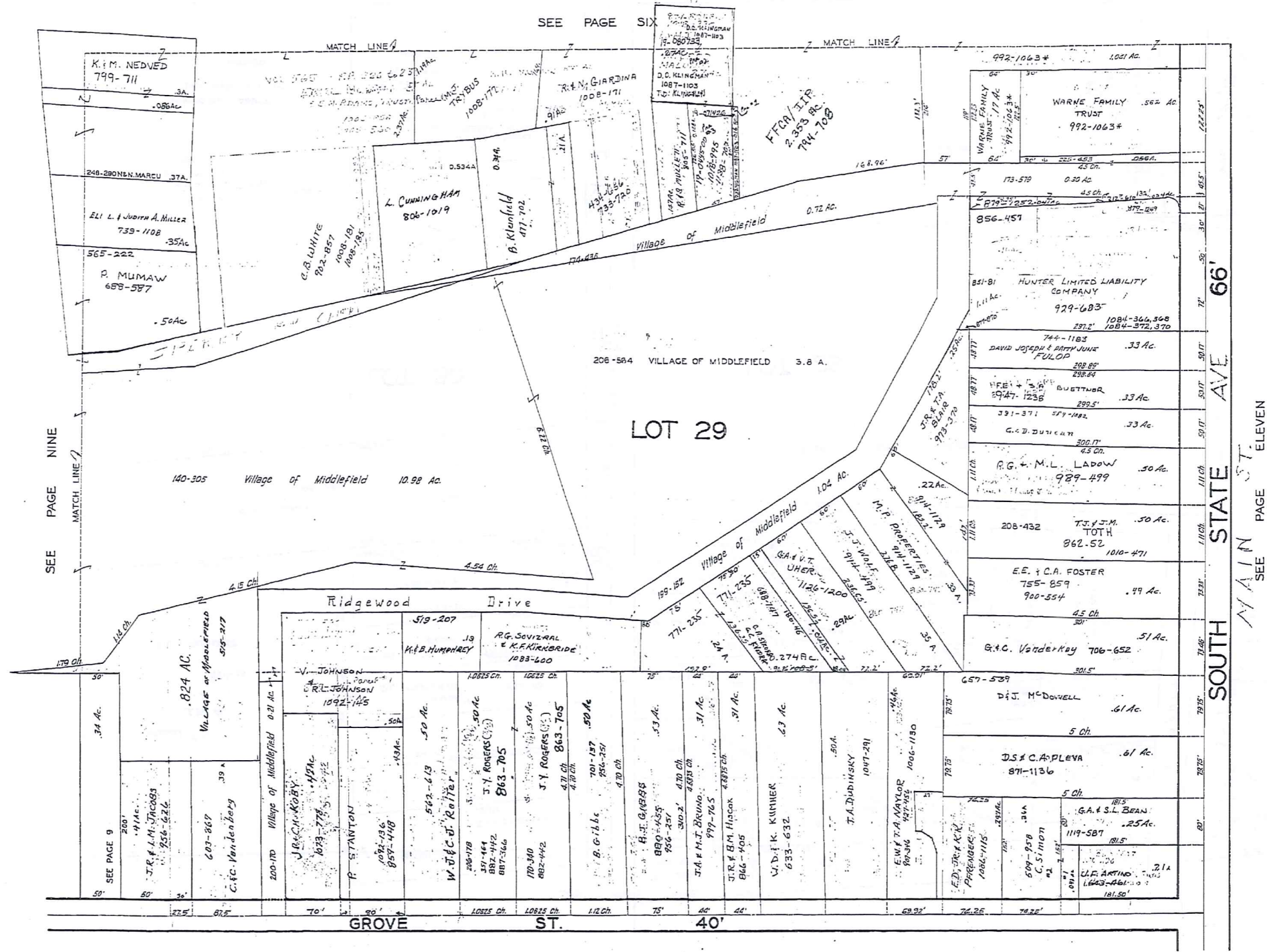
315

SEE PAGE 10

SEE PAGE THIRTEEN

SCALE IN 1/10 OF AN INCH

1-800-345-7334

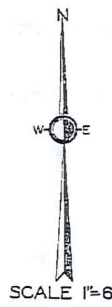


SEE PAGE NINE

SEE PAGE SIX

66' SOUTH STATE AVE
SEE PAGE ELEVEN

SEE PAGE FOURTEEN



SCALE 1"=66'

JAN. 1, 1998

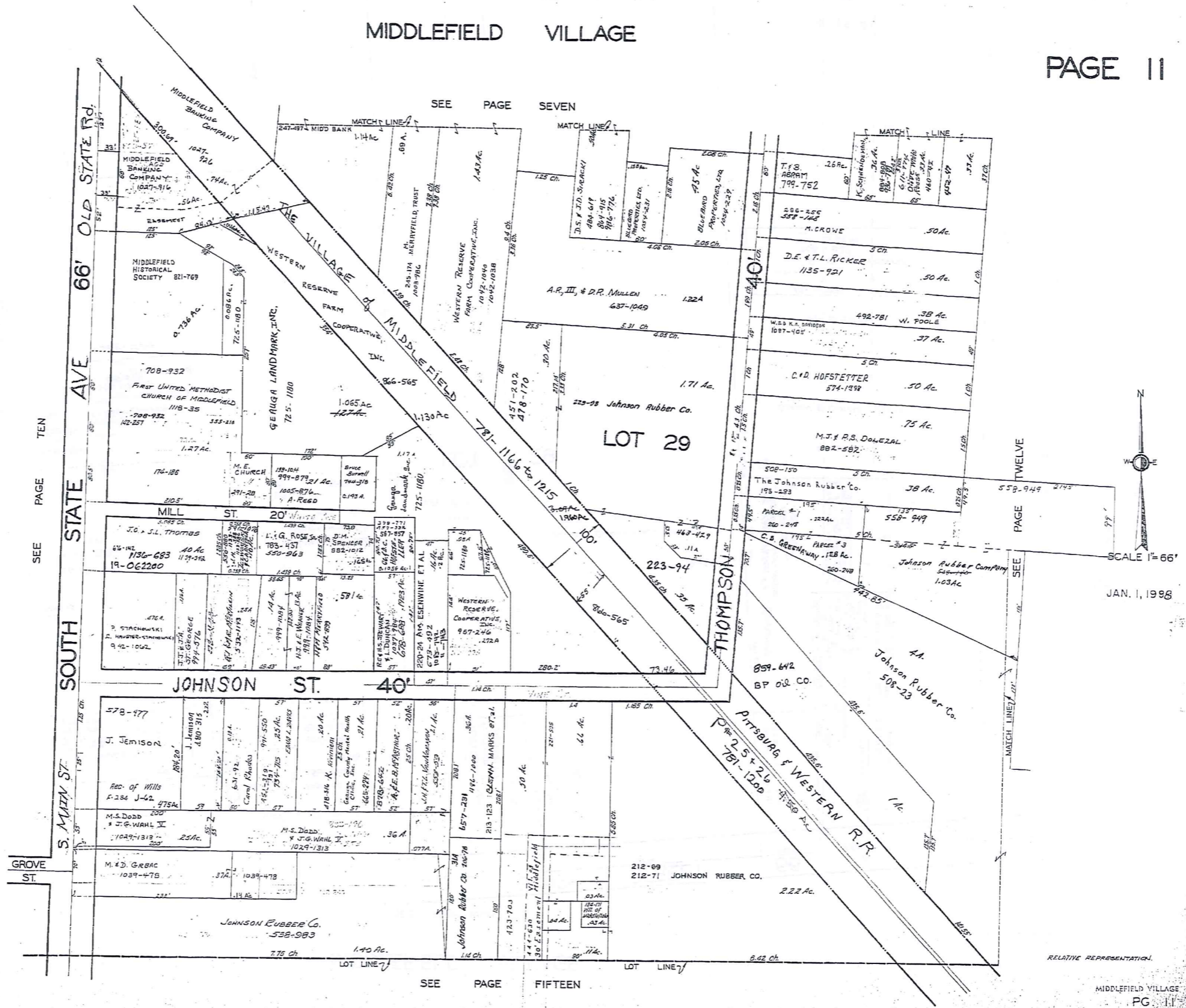
316

MIDDLEFIELD VILLAGE

SCALE IN 1/10 OF AN INCH



1-800-345-7334



SEE PAGE TEN

SEE PAGE SEVEN

SEE PAGE TWELVE

SEE PAGE FIFTEEN



SCALE 1" = 66'

JAN. 1, 1998

317

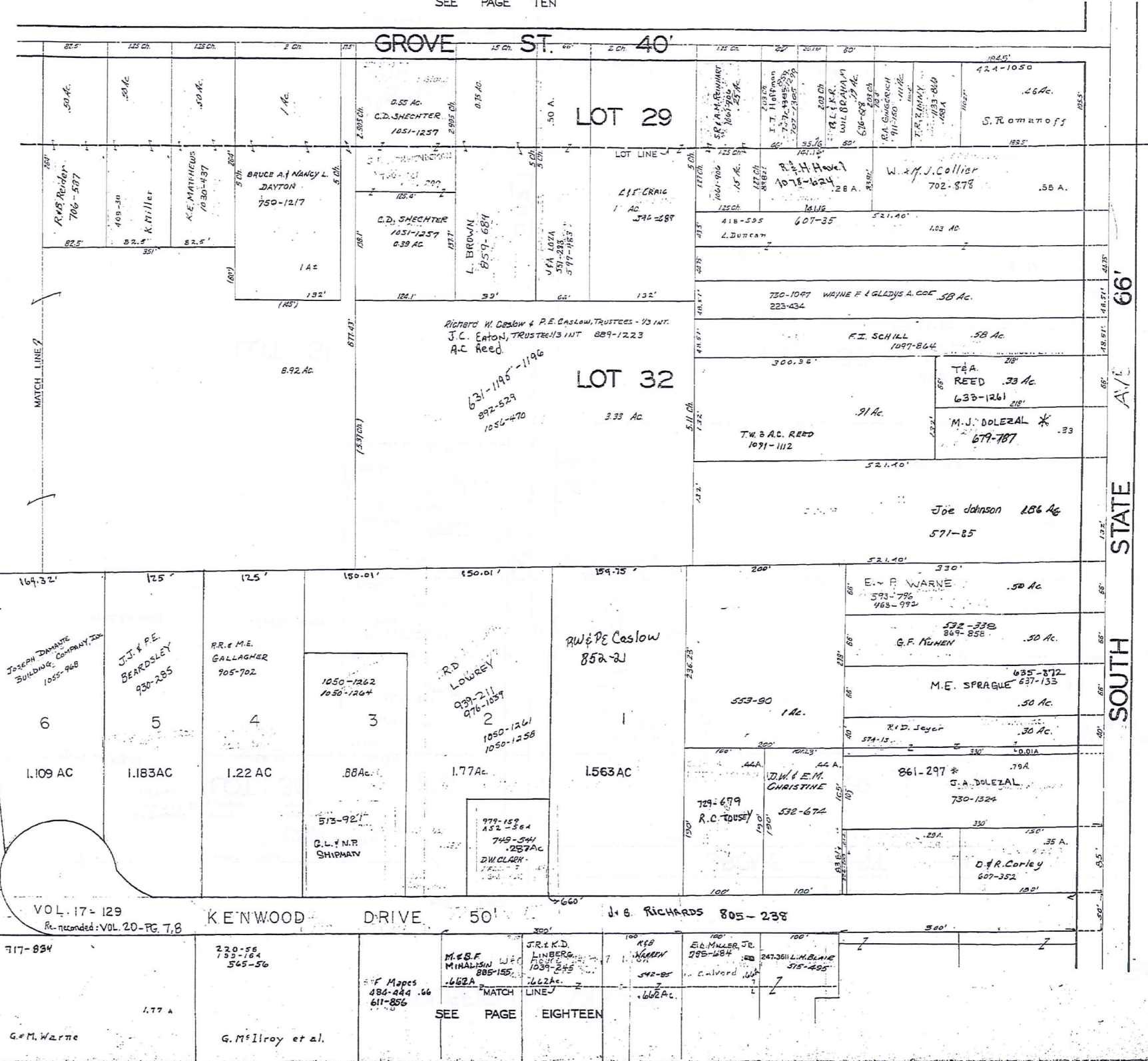
SEE PAGE TEN

SCALE 1/10 OF AN INCH

1-800-345-7334

PAGE THIRTEEN

SEE PAGE FIFTEEN



JAN. 1, 1998

320

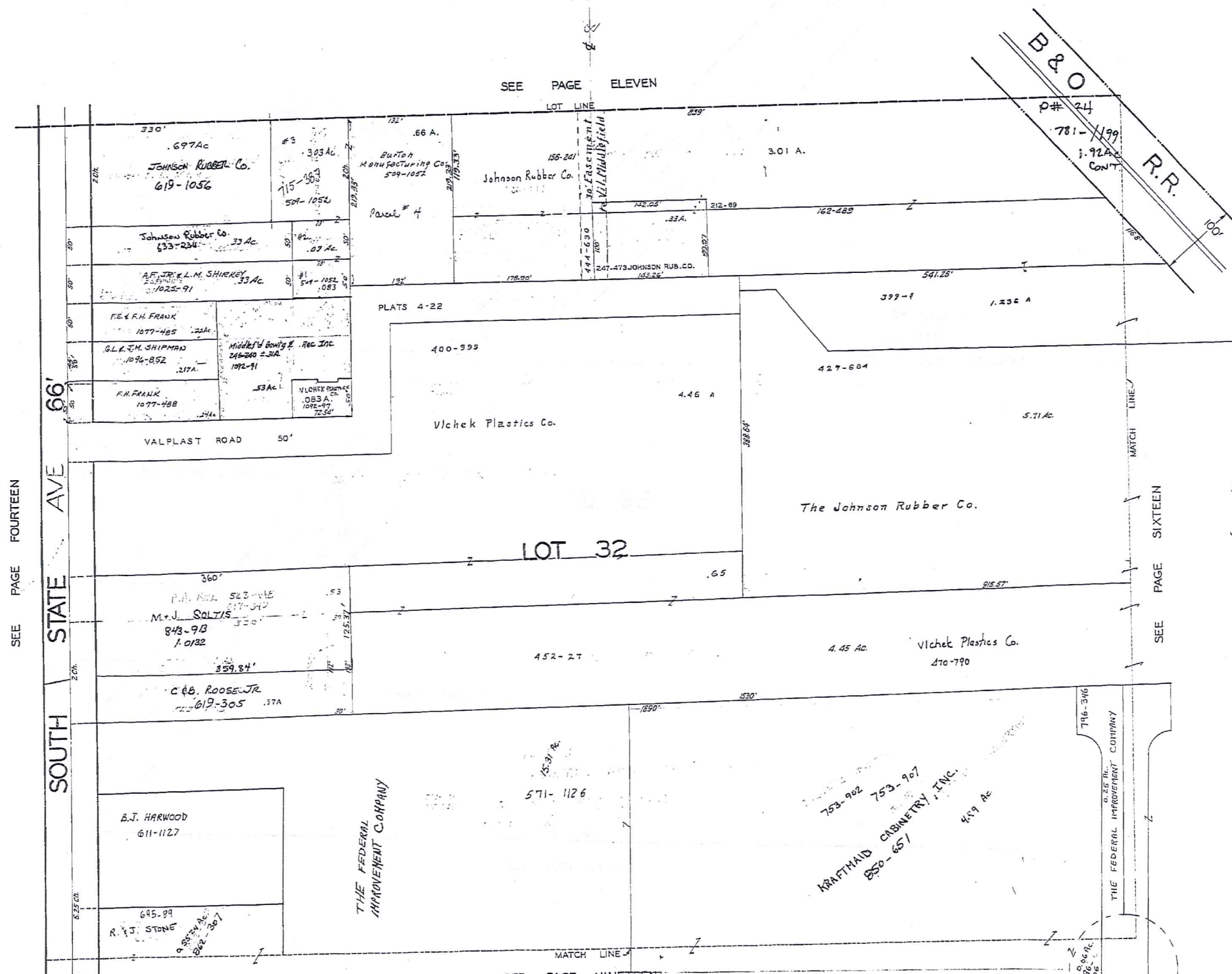
RELATIVE REPRESENTATION
MIDDLEFIELD VILLAGE
PG. 14

MIDDLEFIELD VILLAGE

SCALE IN 1/10 OF AN INCH



1-800-345-7334



SEE PAGE ELEVEN

B & O R.R.

SEE PAGE FOURTEEN SOUTH STATE AVE 66'

SEE PAGE SIXTEEN



SCALE 1"=66'

JAN. 1, 1995

321

SEE PAGE NINETEEN

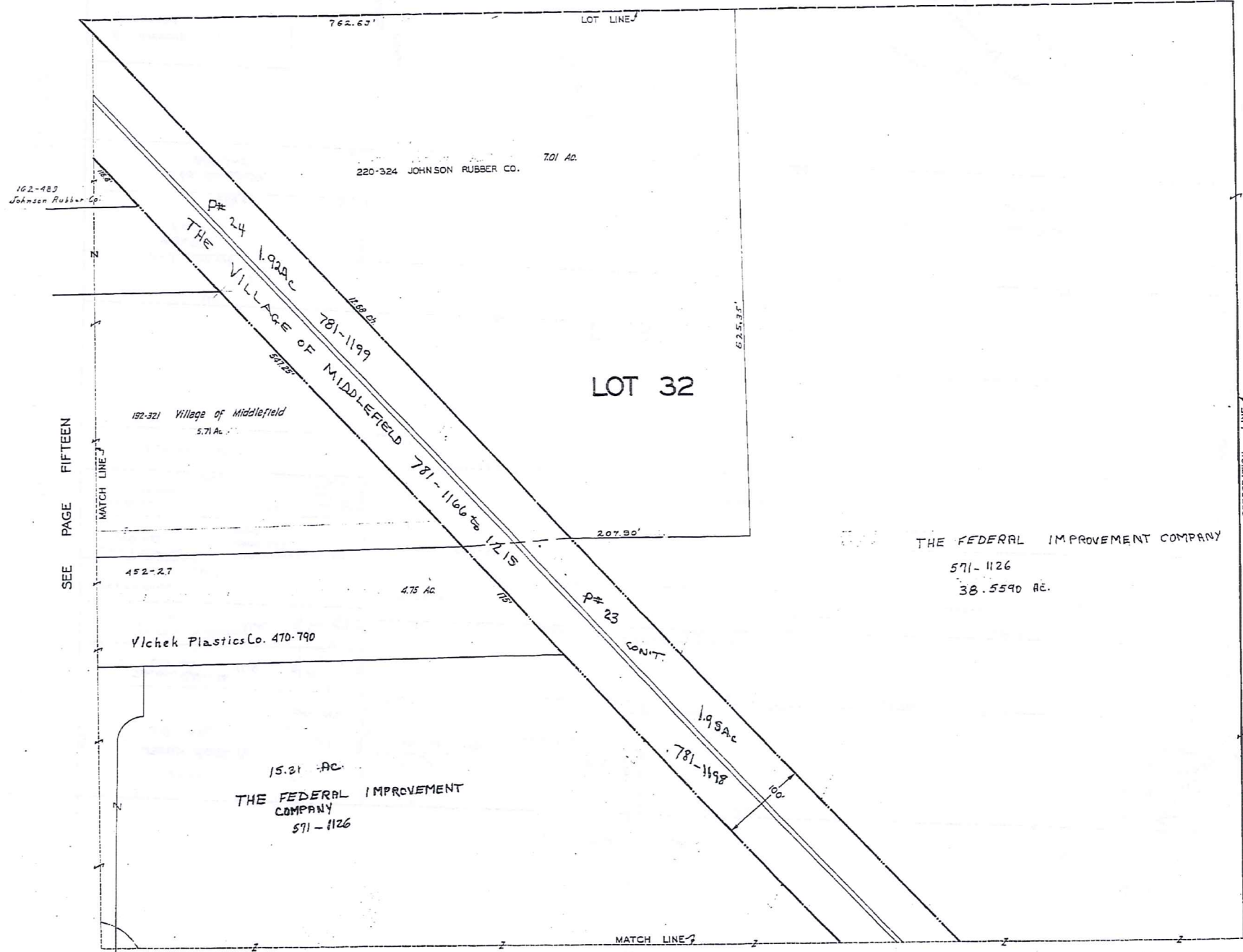
RELATIVE REPRESENTATION

SEE PAGE TWELVE

SCALE IS 1/100 OF AN INCH



1-800-345-7334



SEE PAGE FIFTEEN

SEE PAGE TWENTY

SEE PAGE 21



SCALE 1"=66'

JAN. 1, 1998

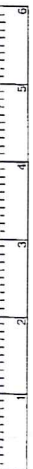
322

RELATIVE REPRESENTATION

MIDDLEFIELD VILLAGE
PG. 16

MIDDLEFIELD VILLAGE

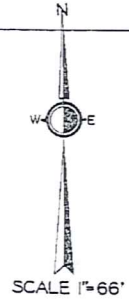
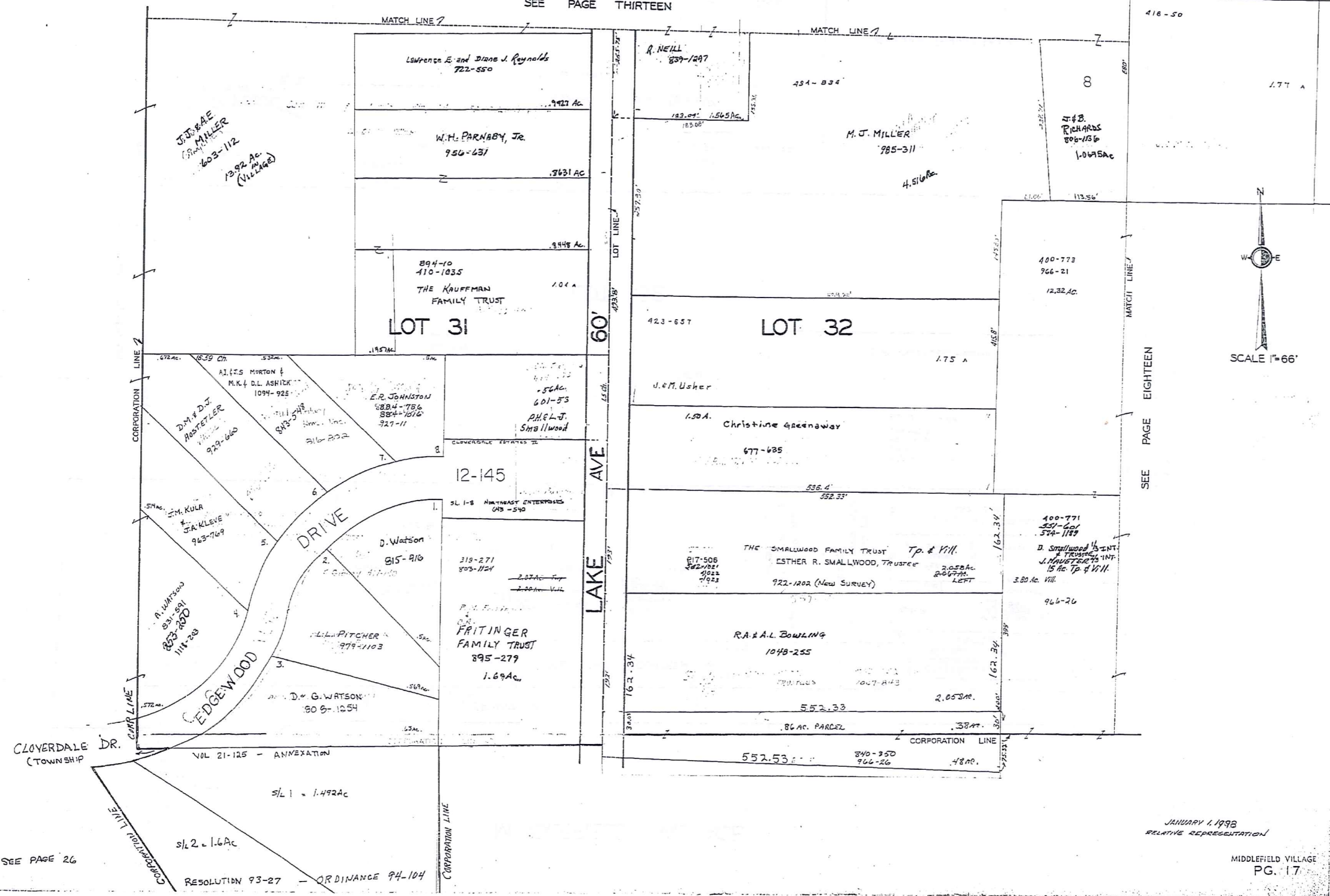
SCALE IN 1/16 OF AN INCH



1-800-345-7334

SEE PAGE THIRTEEN

VOL 17-129
KENWOOD ACRES SUB.
Re-recorded VOL 20-PG. 7, 8



SCALE 1"=66'

SEE PAGE EIGHTEEN

SEE PAGE 26

RESOLUTION 93-27 - ORDINANCE 94-104

JANUARY 1, 1998
RELATIVE REPRESENTATION

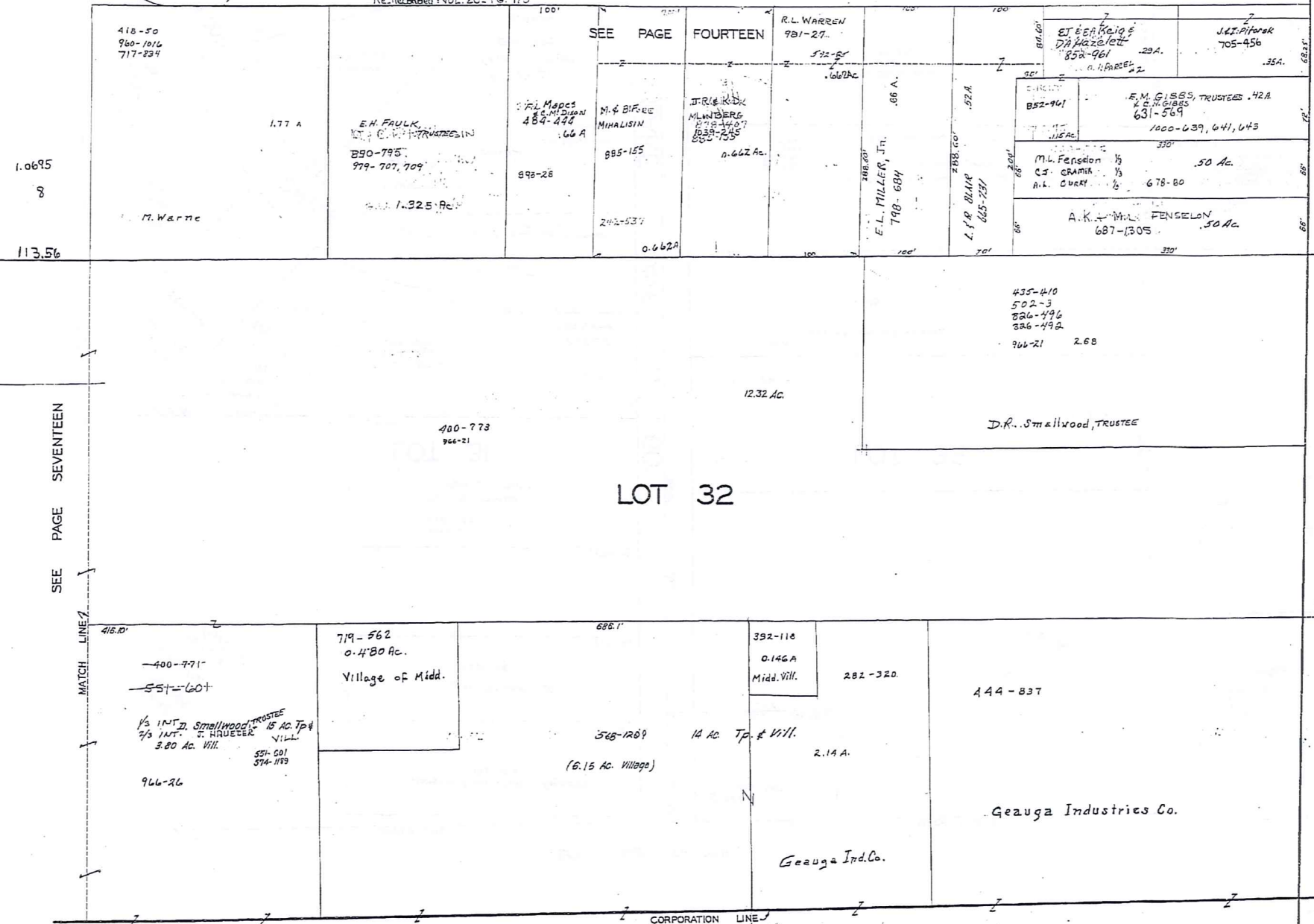
MIDDLEFIELD VILLAGE

VOL 17 - P-129
Re-recorded VOL 20 - PG 7,8
KENWOOD DRIVE

SCALE IN 1/10 OF AN INCH



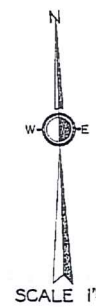
1-800-345-7334



SEE PAGE SEVENTEEN

MAIN ST
SOUTH STATE AVE 66'

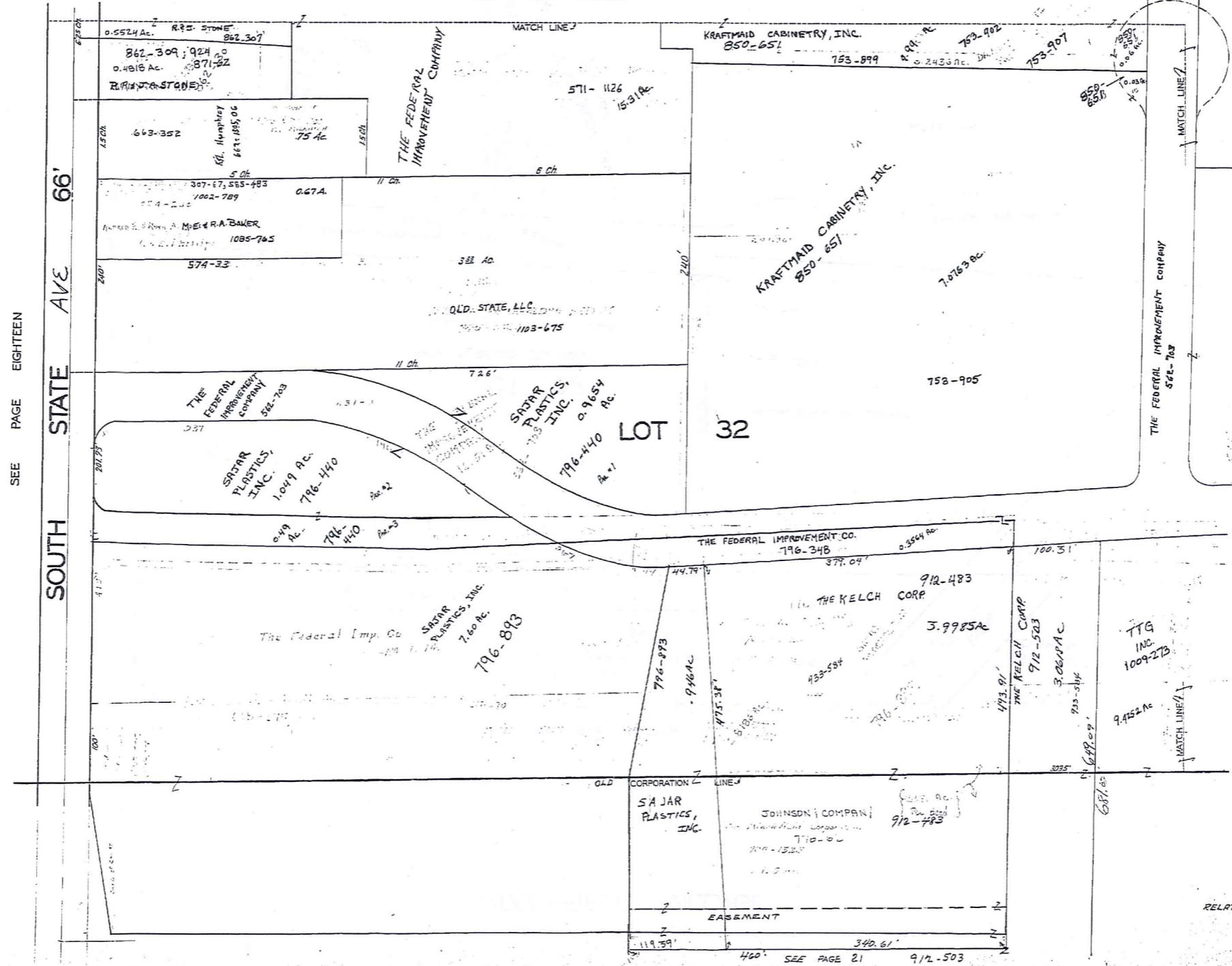
SEE PAGE NINETEEN



324

MIDDLEFIELD VILLAGE

SEE PAGE FIFTEEN



SEE PAGE EIGHTEEN

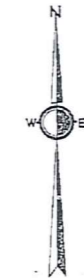
SOUTH STATE AVE 66'

SEE PAGE TWENTY

SCALE IN 1/10 OF AN INCH



1-800-345-7334



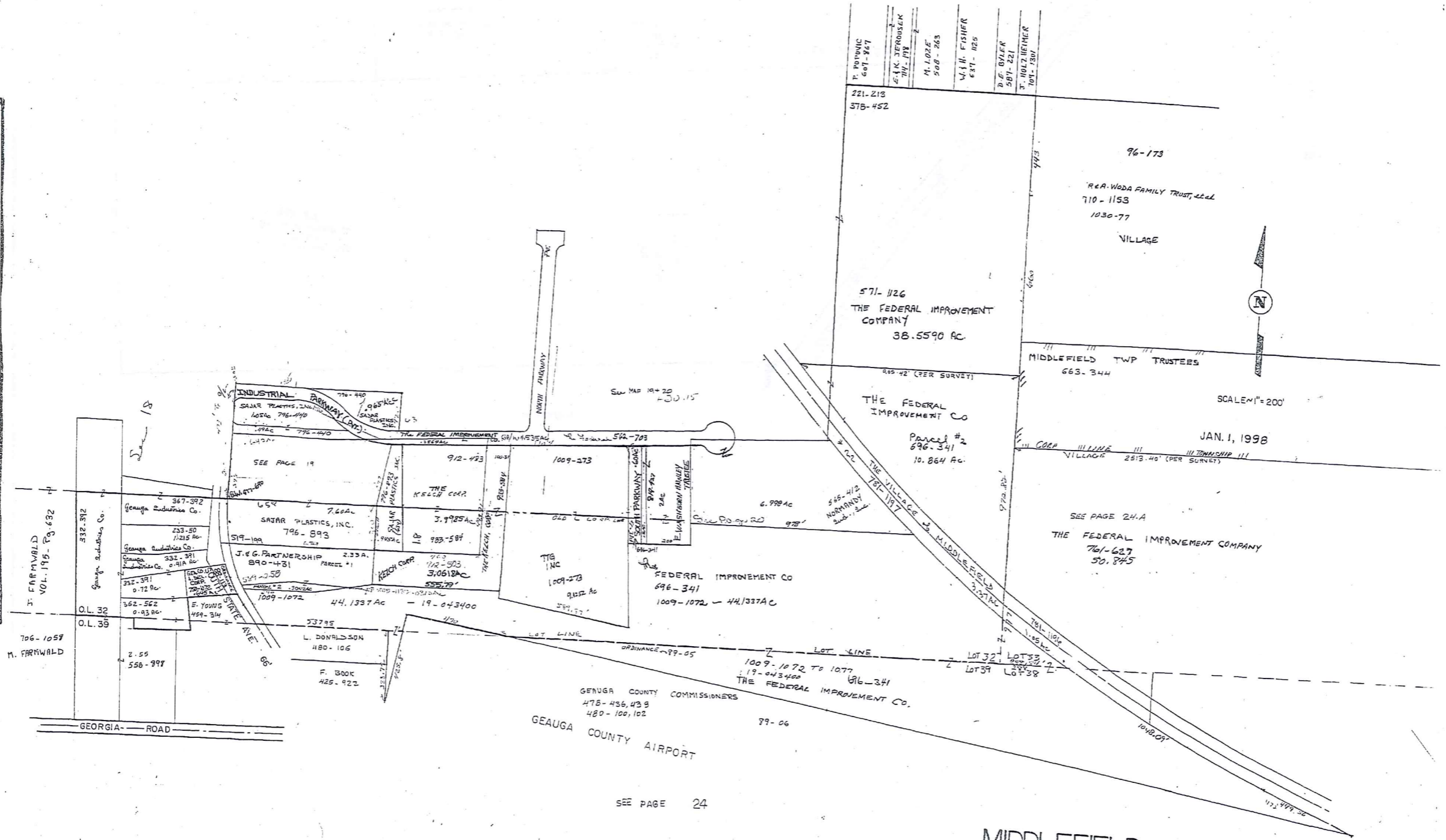
SCALE 1"=66'

JAN. 1, 1998

325

SEE PAGE 21 912-503

SCALE IN 1/10 OF AN INCH
1-800-345-7334



327

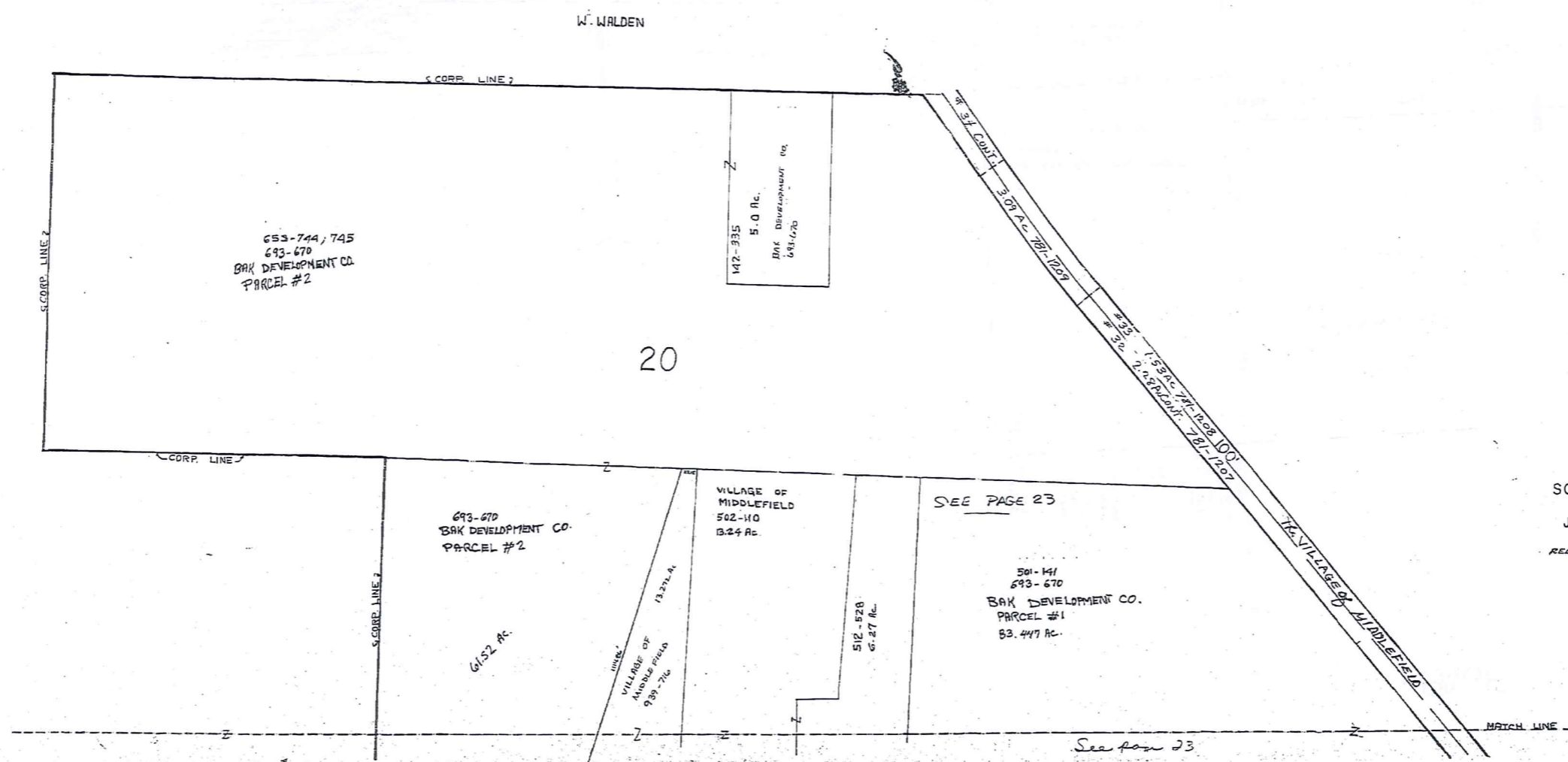
GEAUGA COUNTY COMMISSIONERS
478-436, 439
480-100, 102

GEAUGA COUNTY AIRPORT

SEE PAGE 24

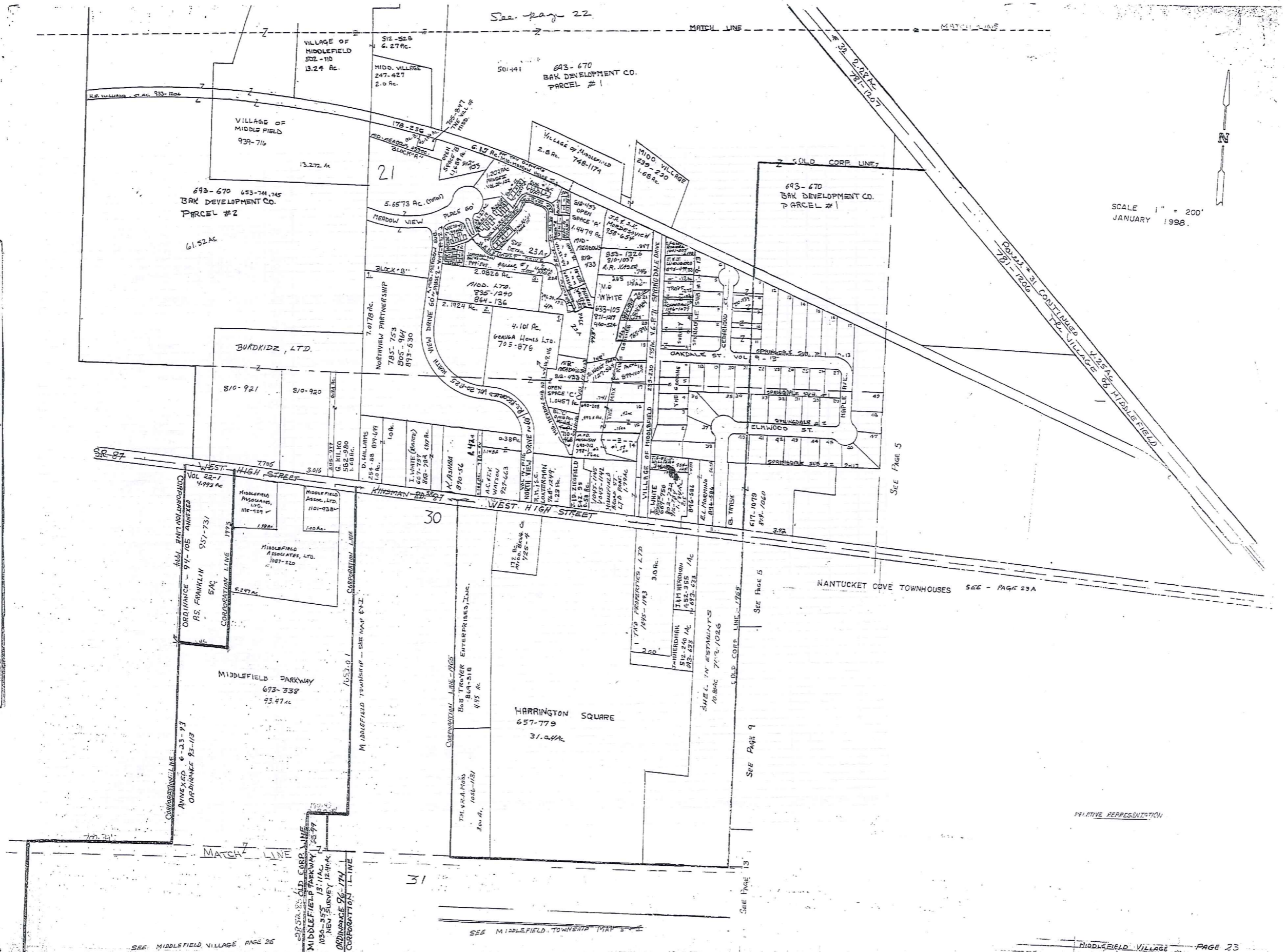
MIDDLEFIELD VILLAGE
RELATIVE REPRESENTATION

SCALE IN 1/10 OF AN INCH
 1-800-345-7334



SCALE 1" = 200'
 JAN. 1, 1998
 RELATIVE REPRESENTATION
 N.W.
 MIDDLEFIELD VILLAGE
 PG. 22

SCALE IN 1/16 OF AN INCH
1-800-345-7334



See page 22

SCALE 1" = 200'
JANUARY 1998

329

SEE MIDDLEFIELD VILLAGE PAGE 26

SEE MIDDLEFIELD TOWNSHIP MAP 5-1

MIDDLEFIELD VILLAGE PAGE 23

RELATIVE REPRESENTATION

SEE PAGE 5

NANTUCKET COVE TOWNHOUSES SEE - PAGE 23A

SEE PAGE 5

SEE PAGE 9

SEE PAGE 13

ORDINANCE 96-174
CORPORATION LINE
MIDDLEFIELD PARKWAY
693-338
93.47 AC
ANNEXED 6-23-94
ORDINANCE 93-113
CORPORATION LINE
MIDDLEFIELD ASSOCIATES, LTD.
1087-220
100 AC
MIDDLEFIELD ASSOCIATES, LTD.
1101-958
100 AC
VOL 22-1
4,993 AC
ORDINANCE - 94-105 ANNEXED
CORPORATION LINE
PS. FAWCETT
957-731
5 AC
CORPORATION LINE
MIDDLEFIELD PARKWAY
693-338
93.47 AC
ANNEXED 6-23-94
ORDINANCE 93-113
CORPORATION LINE
MIDDLEFIELD ASSOCIATES, LTD.
1087-220
100 AC
MIDDLEFIELD ASSOCIATES, LTD.
1101-958
100 AC
VOL 22-1
4,993 AC
ORDINANCE - 94-105 ANNEXED
CORPORATION LINE
PS. FAWCETT
957-731
5 AC
CORPORATION LINE

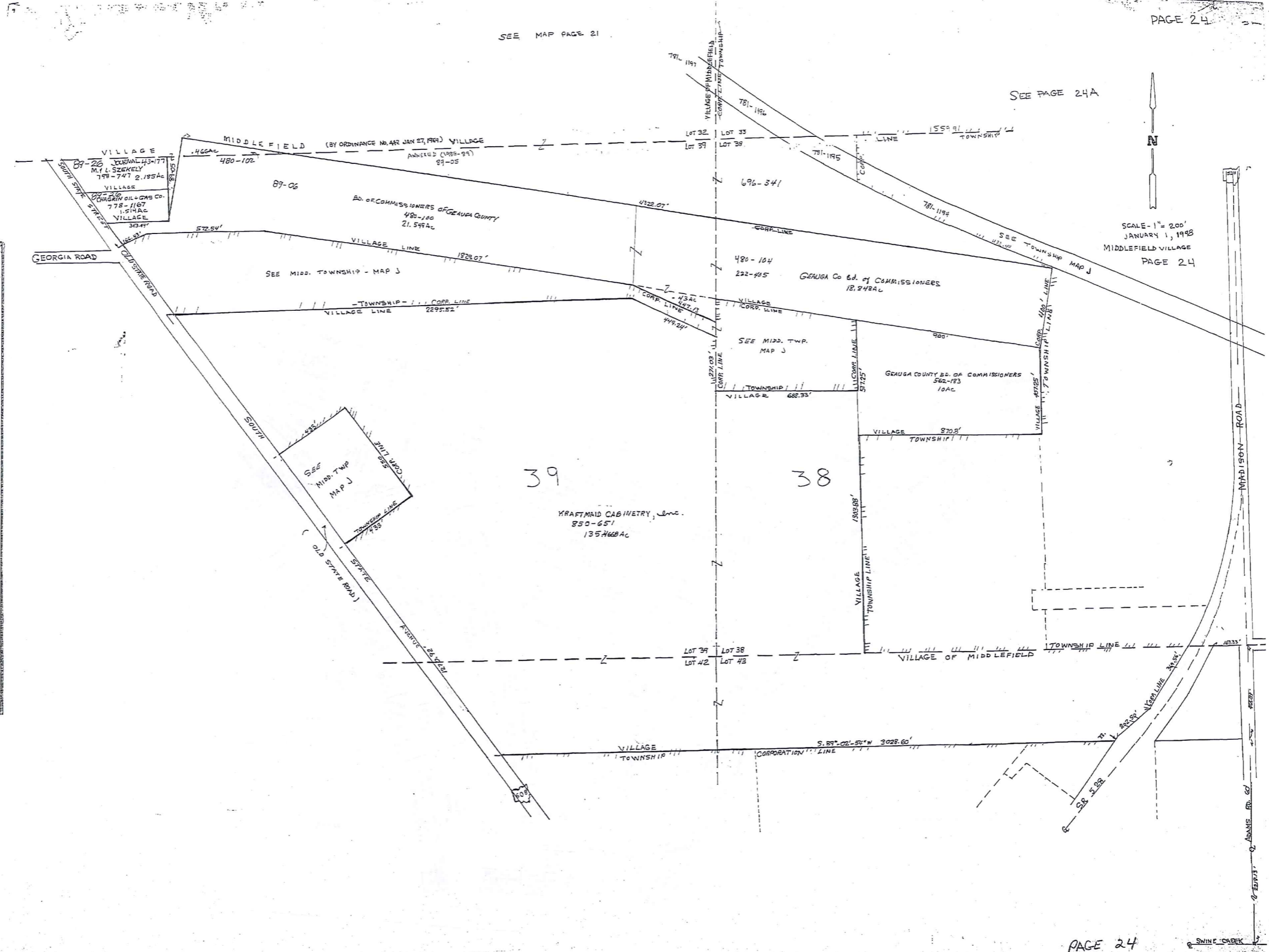
SCALE IN 1/10 OF AN INCH
1-800-345-7334

MIDD. VILLAGE	THE MAX. RUTH B. GOODING SURVEY	VOL 6 - Page 71				VOL 9 - 13												
DATE	OWNER	S/L	AC	VOL	PAGE	TRANSFERRED TO:	S/L	DATE	VOL	PAGE	TRANSFERRED TO:	S/L	DATE	VOL	PAGE			
ORVILLE	N NELSON	1	0.226	562	720													
	R. D. BAUMGARTNER	2	0.225	381	670													
	F. SALES	3	0.225	387	456													
	S. L. THOMAS	4	0.225	480	812													
	T. R. MOSS	5	0.225	553	1272													
	L. McELROY aka L. EDWARDS	6	0.225	710	526	P.E. GILCHRIST	6	10/24/92	922	861								
	R.E. CHRISTOFFERSON	7	0.225	873	912	E. CHRISTOFFERSON	7	10/24/92	1227	1227								
	"	8	0.225	873	912	"	8	"	"	"								
	J. M. BORKHOLDER	9	0.225	495	418													
	K. J. HERSON	10	0.225	785	9													
	G. J. TRAPP	11	0.225	734	289													
	SPRINGDALE	"	12															
M. D. MIHALISIN		13	0.225	736	1													
L. K. JONES		14	0.225	680	201													
"		15	0.225	"	"													
D. S. CLARKE		17	0.337	576	1351	E. CLARKE	17	9/27/94	923	136								
T. A. D. M. POLAKOWSKI		18	0.337	279	1107													
W. R. T. HOSTETLER		19	0.337	833	1017													
J. W. R. STEELE		20	0.337	765	891													
R. I. E. A. CORKMAY		21	0.337	894	969													
R. L. KASER		22	0.337	524	33													
C. E. WOOD ST.		D. M. PARTON	1	0.247	705	171												
		R. GUILLEN	2	0.247	547	897	J. STEVENS	2	619	322	M.E. - V. BOYLES	2	9/24/10	590				
	P. L. WISEMAN	3	0.247	735	31													
	R. L. T. K. DETWEILER	4	0.247	925	1312	C. L. E. GAUSE	4	5/29/94	922	537								
	G. W. B. N. WILKES	5	0.247	537	639													
	N. LANGHAM	6	0.247	1122	1174	W. COYLE	6	3/11/94	1120	1174								
	A. M. SATTERLEE	7	0.247	815	442													
	G. GULOP	8	0.247	780	739													
	A. D. BARCICKOWSKI	9	0.247	537	924													
	"	10																
	E. STEWART	11	0.247	936	270													
	D. H. DALE ST.	E. E. SELBY	12	0.250	424	600												
M. E. E. BRILLANT		13	0.250	912	14													
W. E. OSMOND		14	0.250	576	1033													
"		15	0.250	576	1032													
A. B. R. M. HILL		16	0.250	902	966													
R. DEMARCO		17	0.250	533	1206	R. J. & C. M. DEMARCO	17	10-14-1000	720	R. J. & C. M. DEMARCO	17	12/22/1086	521	R. J. & C. M. DEMARCO	1072/60	17	10/1/1132	262
D. C. HERSH		18	0.250	810	235													
R. J. & M. T. DETWEILER		19	0.250	878	90	R. J. & M. T. DETWEILER	19	3-12-94	1043	1082	G. C. ZIEGLER	19	3/22/1043	1084				
"		20	0.250	845	1193	"	20	"	"	"	"	20	"	"	"			
E. S. C. ZIEGLER		21	0.250	702	551													
J. D. SMITH		22	0.250	617	729													
E. L. WOOD ST.		L. G. L. EIERMANN	23	0.250	593	909												
	R. R. HATH	24	0.250	733	299	E. M. SORUSO	24	2-20	1023	631								
	E. M. COX	25	0.250	855	519													
	M. A. & A. CONTINENZA	26	0.257	921	66/68	K. A. CONTINENZA	26	2-27	996	1022								
	J. L. & V. MILLER	27	0.257	527	671													
	"	28																
	P. G. WATSON	29	0.337	259	837													
	N. A. L. SHUMINSKI	30	0.337	713	614													
	R. J. WEIRICH	31	0.337	812	1081													
	T. L. V. McFANEY	32	0.337	551	201	V. McFANEY				974	499							
	W. E. K. BLUF	33	0.337	591	1090													
	R. D. KLEPPER	34	0.337	593	727													
K. E. FERRY	35	0.337	551	256														
B. MAZZONE	36	0.337	551	181														
D. M. MARES	37	0.337	775	1109														
A. S. PETRICK	38	0.337	661	337														
"	39																	
W. E. & D. M. CANTERBURY	40	0.337	552	913	R. P. & M. FALLORE	40	0-333	1004	15									
J. BRUCE	41	0.337	663	711														
T. & P. AKERS	42	0.337	829	457														
C. J. BRIGHAM	43	0.337	521	574														
A. LEGGNEY WESLEYAN METHOD	44	0.337	441	541														
M. & D. ROACH	45	0.337	856	447														
J. W. & K. M. BLASUS	46	0.337	551	540														
R. A. & A. BRAUN	47	0.337	556	1077														
J. R. HOSTETLER	48	0.337	937	625														
W. J. SLY	49	0.337	766	771														

SEE PAGE 24A

SCALE IN 1/10 OF AN INCH
1-800-345-7334

SCALE - 1" = 200'
JANUARY 1, 1998
MIDDLEFIELD VILLAGE
PAGE 24



SCALE IN 1/16 OF AN INCH
1-800-345-7334



S/L	GLEN VALLEY FARMS #3	DATE	VOLUME
54	GLEN VALLEY FARMS, LTD.	12-12-97	1133-678
55			
56			
57			
58			
59	Middlefield Homes, Inc.	2-3-98	1140-45
60			
61			
62	L.A. Kirby - D.E. Mills, Jr.	2-27-98	1143-1110
63			
64			
65			
66			
67			
68			
69			
70			
71			
72			

S/L	GLEN VALLEY FARMS #2	DATE	VOLUME
1	W.W. & B.M. Hill	9-10-73	953-532
2	R. HARRISON	9-18-74	1070-302
3	C.A. REEDY	2-24-98	1143-595
4	W.H. & E.A. DUNLAP	3-24-95	1011-240
5	J. LINNAN	12-9-74	1002-1179
6	D.A. VIEZKA & K.E. Bate	3-5-97	1044-470
7	M.L. PATTERSON, JR. & Y.M. PATTERSON	1-4-94	948-149
8	R.H. & E. MOONITZ	5-18-95	1015-711
9	V.H. & G.L. POOLE	11-26-97	1131-1807
10	P.S. & S.S. Chase	2-4-98	1140-168
11	M.B. & M.M. HANISH	12-30-93	967-1176
12	S.J. & G.T. WALLACE	12-30-93	967-1073
13	D.S. & P.J. KHALIK	12-24-93	967-317
14	M.C. PETRAS	6-21-96	1055-1206
15	R.T. & M. ROSS	8-1-94	989-838
16	M.M. MUHL & B.M. LYNE	9-29-93	954-1115
17	R.A. & R.M. GEITHER	1-12-94	968-1315
18	F.M. & F. TUNDA	8-19-96	1065-214
19	E.L. & L. MARCHINI	9-27-93	954-1325
20	T.F. MILLER & A.K. BUEHNER	1-20-96	1041-353
21	R.R. & C.A. WOLFERT	8-31-94	992-929
22	S.A. HURSH	2-27-96	1143-905
23	A.S. ARTHUR	5-19-97	1105-43
24	V.J. GIBALDI	12-8-94	1002-912
25	A.R. McMILLIN	11-10-97	1129-240
26	A.T. & D.J. WEATHERHOLT	12-10-93	964-1135
27	S.J. & M.E. SARCENT	8-22-94	991-1021
GLEN VALLEY FARMS #2 VOL 21 - P. 116 & 117			
28	Damon Homes, Inc.	2-6-78	1140-670
29	Damon Homes, Inc.	9-26-76	1078-428
30	GLEN VALLEY FARMS, LTD.	12-10-97	1133-678
31	E.W. NOVAK	5-24-96	1052-1165
32	S.C. & A.E. DAY	9-13-96	1069-577
33	T.M. & G.A. O'KEEFE	10-3-97	1127-888
34	W.J. BADELL & D.S. MONTGOMERY	6-12-96	1055-55
35	S.M. & C.S. STEFALIK	5-23-95	1014-424
36	D.C. & H.L. MULLETT	2-25-95	1025-792
37	D.J. PARTRIDGE	8-26-97	1118-891
38	C.M. WENNES	3-10-96	1095-1088
39	S.E. & L.A. KLEIN	10-31-96	1032-783
40	S.E.C.L. TEMPLETON	1-31-97	1090-200
41	W.J. & V.I. CORNELL	3-1-96	1042-1065
42	GLEN VALLEY FARMS, LTD.	12-10-97	1133-678
43	J.R. & S.M. DORA	2-19-97	1092-667
44	J.L. KISH & K.A. DOWNER	6-21-96	1056-170
45	R.C. & W.A. LUDWIG	7-22-96	1060-401
46	J.A. & B. COSTA	8-2-96	1061-944
47	J.T. G. BEHN	12-9-95	1017-616
48	P.M. & J.M. WALTERS	6-14-96	1055-447

334

129.0826 AC
ORDINANCE 91-150
MID. ANNEXED 12-24-91

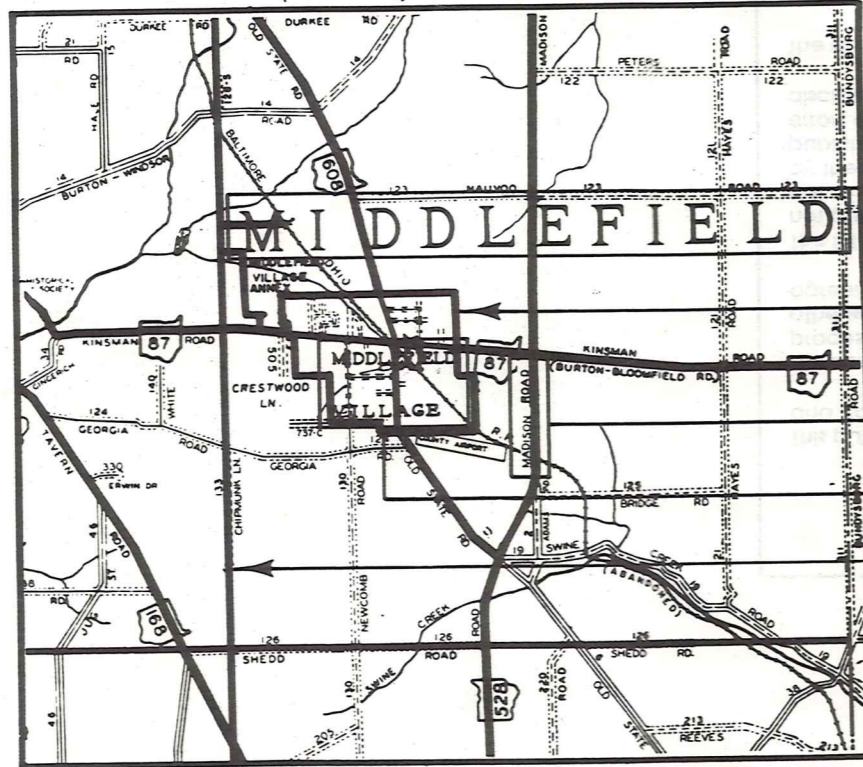
Indicates survey file with map sheets

SCALE 1" = 200'
JAN. 1, 1998

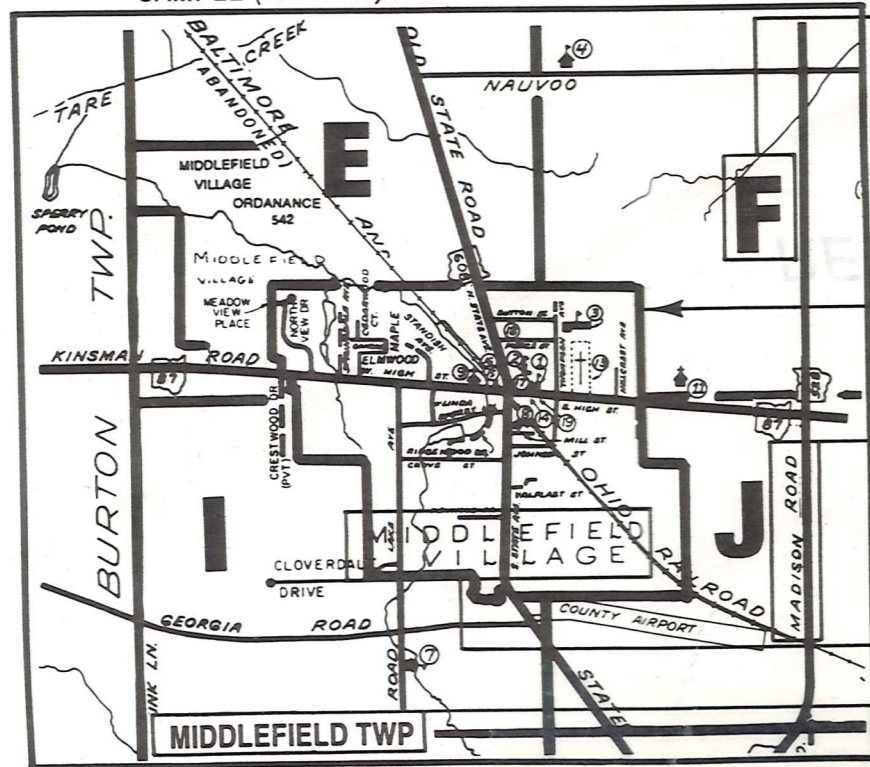
Explanation and Use Sheet for Geauga County, Ohio

A

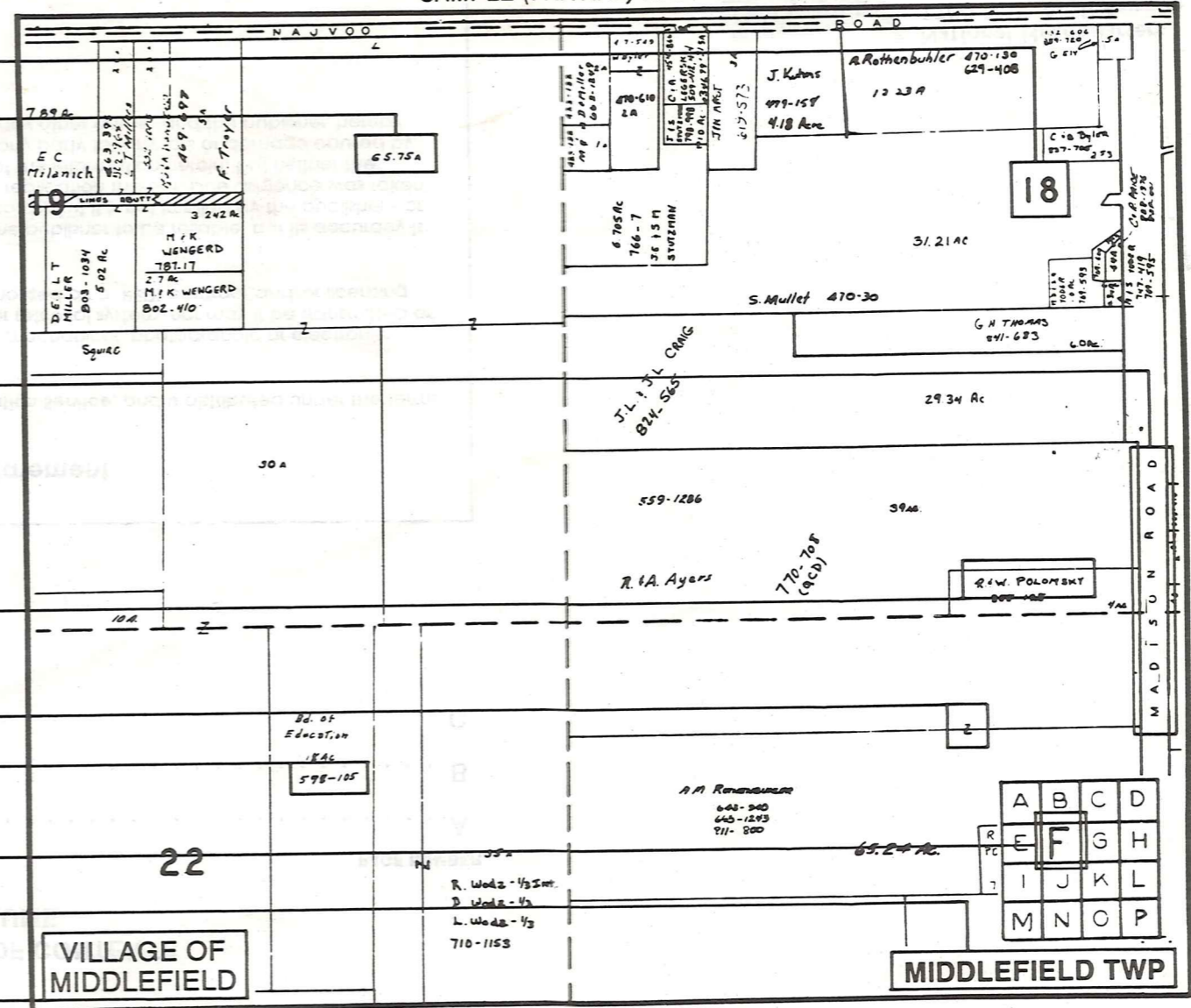
SAMPLE (PARTIAL) COUNTY INDEX MAP



SAMPLE (PARTIAL) MUNICIPALITY INDEX MAP



SAMPLE (PARTIAL) MAP PAGE



- Tract Lot Number
- Acreage
- Township Name
- Village Boundary
- Street Name
- Village Name
- Township Boundary
- Owners Name
- Denotes Continuous Ownership
- Deed Book & Page
- Map Page Number
- Township Name
- Village Name

- Village Boundary
- Street Name
- Village Name
- Township Name

USE OF THE MAP VOLUME

1. LOCATE THE GENERAL AREA OF INTEREST ON THE COUNTY INDEX MAP AND NOTE THE MUNICIPALITY NAME (TOWNSHIP OR VILLAGE).
 2. REFER TO THE TABLE OF CONTENTS AND NOTE THE BEGINNING ATLAS PAGE NUMBER FOR THE MUNICIPALITY OF INTEREST.
 3. TURN TO THE PAGE INDICATED, ON THIS PAGE WILL APPEAR AN INDEX MAP FOR THAT MUNICIPALITY.
 4. LOCATE THE GENERAL AREA OF INTEREST AND NOTE THE MAP PAGE NUMBER. THIS MAY BE EITHER A LETTER OR A NUMBER.
 5. MAP PAGES ARE IN ALPHABETICAL (OR NUMERICAL) SEQUENCE FOLLOWING THE MUNICIPALITY INDEX MAP. FOLLOW SEQUENCE TO THE MAP PAGE INDICATED.
 6. LOCATE SPECIFIC PARCEL OF INTEREST AND NOTE THE DESIRED INFORMATION.
- NOTE: ON SOME MAPS YOU MAY BE REFERRED TO A DETAIL SHEET SHOWING AN ENLARGEMENT OF THE AREA. THESE MAPS ARE FOUND AT THE END OF THE REGULAR MAP PAGES IN EACH MUNICIPALITY IN EITHER ALPHABETICAL OR NUMERICAL SEQUENCE.
- NOTE: CHARDON VILLAGE HAS TITLE SHEETS. TO LOCATE OWNERS NAME, NOTE THE PARCEL NUMBER, REFER TO THE TITLE PAGE FOLLOWING THE MAP OF INTEREST, FOLLOW NUMERICAL SEQUENCE TO THE PARCEL NUMBER OF INTEREST AND NOTE THE DESIRED INFORMATION. IN ALL OTHER MUNICIPALITIES THE OWNERS NAME APPEARS ON THE MAP PAGE.